

Parts & Accessories



Introductions:

We offer a broad range of parts and accessories to lift your experience with Labwit equipment. Whether it is shaking trays, flask clamps, or spring pallets, we let you keep it real with Labwit genuine parts. Please take a few minutes to go through our pdf catalogs. Do not hesitate to contact us or your local authorized dealer for more details

Standard Shaking Trays

(For Shaking Incubators)

- As a basic platform for all shaking equipments, shaking tray/s are included with the main units. Two trays are included with all double layer units. Extra shaking trays can be ordered separately if necessary.
- All shaking trays are made of high quality materials, for example, the spray coated steel trays of floor shakers, and SUS304 stainless steel trays of all shaking incubators.
- All shaking trays (except for stackable models) are made of SUS304 stainless steel, and carefully perforated with standard holes distance intervals, which offers 100% flexibility for any attachment combinations on the shaking tray, for example, flask clamps, test tube racks, or 96 well plates, etc.
- The shaking trays of all stackable shaking incubators are made of SUS304 stainless steel corrosion-resistant anodized aluminum, featuring threaded screw holes to fit with the specialized flask clamps with countersink screws.

Part NO.	Description
P6001	Tray for ZWY-103B/D, S/S
P6002	Tray for ZWY-100H/100D, S/S
P6004	Tray for ZWY-240/200D, ZWYR-240/200D, S/S
P6006	Tray for ZWY-111B/211B/111C/211C, ZWYR-211C, S/S
P6007	Tray for ZWYR-211D, S/S
P6008	Tray for ZWF-111/211, ZWFR-211, S/S
P6010	Tray for ZWY-1102C/2102C, ZWYR-2102C, S/S
P6011	Tray for ZWY-1102/2102, ZWYR-2102, S/S
P6012	Tray for ZWY-1112B/2112B, ZWYR-2112B, S/S
P6013	Tray for ZWF-1112/2112, ZWFR-2112, S/S
P6014	Tray for ZWY/ZWYK-110X30, S/S
P6015	Tray for ZWY/ZWYK-110X50, S/S
P6016	Tray for ZWY-304/ZWF-334, S/S Clamp Tray
P6017	Tray for ZWY-304/ZWF-334, S/S Bar Trayx1, Rubber Barx4, Knobx8
P6018	Tray for ZWQ-344, Stl S/C Trayx1, with springx4, Rubber Matx1
P6020	Tray for ZWY-322B/3222B Stl S/C
P6021	Tray for ZWY-322C/B3222 Stl S/C
P6022	Tray for ZWYC-290A, Predrilled
P6023	Tray for ZWYC-290A, Plain
P6024	Predrilled Tray for ZWYR-D2401/2402/2403
P6025	Tray for ZWYR-D2401/2402/2403, Plain
P6028	Tray for ZWYR-293, Predrilled
P6029	Tray for ZWYR-293, Plain



P6004 and Flasks

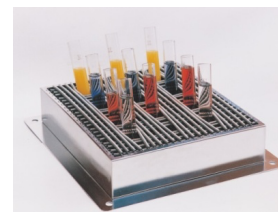


P6016 and Flasks

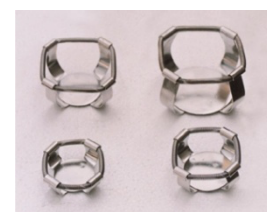
Universal Spring Pallet

- Universal spring pallet is designed to offer most flexibility for holding uncommon vessels and containers by using springs to divide the pallet area into a number of small sections.
- Available for most shakers, rockers and shaking incubators.
- Each full size universal spring pallet has the same width and depth of the standard shaking tray of each model respectively.
- Full size universal spring pallets can only be installed after the standard shaking tray is removed.

Part NO.	Description
P7001	Universal Spring Pallet for ZWY-103B/103D
P7002	Universal Spring Pallet for ZWY-100H/100D
P7003	Universal Spring Pallet for ZWY-240/200D, ZWYR-240/200D
P7004	Universal Spring Pallet for ZWYR-D2401
P7007	Universal Spring Pallet for ZWY-111B/211B/111C/211C, ZWYR-211C, Ful Pcs
P7008	Universal Spring Pallet for ZWYR-211D, Ful Pcs
P7009	Universal Spring Pallet for ZWF-111/211, ZWFR-211, Ful Pcs
P7011	Universal Spring Pallet for ZWY-1102C/2102C, ZWYR-2102C
P7012	Universal Spring Pallet for ZWY-1102/2102, ZWYR-2102, Ful Pcs
P7013	Universal Spring Pallet for ZWY-1112B/2112B, ZWYR-2112B, Ful Pcs
P7014	Universal Spring Pallet for ZWF-1112/2112, ZWFR-2112, Ful Pcs
P7015	Universal Spring Pallet for ZWY/ZWYK-110X30
P7016	Universal Spring Pallet for ZWY/ZWYK-110X50
P7017	Universal Spring Pallet for ZWY-304/ZWF-334
P7019	Universal Spring Pallet for ZWY-322B/3222B
P7020	Universal Spring Pallet for ZWY-322C/B3222
P7022	Universal Spring Pallet for All Hrzntl Model, 1/2 Pcs
P7023	Universal Spring Pallet for All Dbl Lyr Model, 1/2 Pcs
P7024	Universal Spring Pallet for ZWYR-293



P7003



O Clamps



T Clamps

Flask Clamps

- All flask clamp attachments are designed for various Erlenmeyer flasks, made of high-quality stainless steels. They are available in two types, one specific type designed for the shaking trays of stackable shaking incubators, known as **"O Clamp"**, and the general type for all other shakers and rockers, known as **"T Clamp"**.
- **O Clamps** features countersink holes on the bottom and individual countersink screws supplied. This type of clamps can be easily fixed securely onto the shaking trays of stackable shaking incubators by screwing into the threaded holes with a general Philip's screwdriver.
- The traditional **T Clamps** have screw pins on the bottom of the clamps. Individual nuts are used to fix the clamps onto the standard trays through the predrilled holes .
- Clamps of 750ml in size and below are equipped with 1 screw pin/countersink hole per unit. While 4 screw pins/countersink holes on each clamps of 1L in size and above for more security.
- Clamps of 2L size and above are made of premium quality spring stainless steel for better security and grip.
- We offer customization services of clamps designing for Schott glass bottles, Fernbach flasks, or your individual requests. Contact us or your local distributor to discuss your requirements.

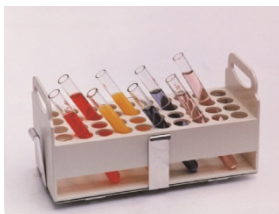
Part NO.	Description	Part NO.	Description
T Type Clamps (All models, except Stackable Shaking incubators)		O Type Clamps (Stackable Shaking Incubators Only)	
P8001	T Clamp, S/S, for 50ml Flask, with Spring Retainer	P8021	O Clamp, S/S, for 50ml Flask, with Spring Retainer
P8002	T Clamp, S/S, for 100ml Flask, with Spring Retainer	P8022	O Clamp, S/S, for 100ml Flask, with Spring Retainer
P8003	T Clamp, S/S, for 250ml Flask, with Spring Retainer	P8023	O Clamp, S/S, for 250ml Flask, with Spring Retainer
P8004	T Clamp, S/S, for 500ml Flask, with Spring Retainer	P8024	O Clamp, S/S, for 500ml Flask, with Spring Retainer
P8005	T Clamp, S/S, for 750ml Flask, with Spring Retainer	P8025	O Clamp, S/S, for 750ml Flask, with Spring Retainer
P8006	T Clamp, S/S, for 1000ml Flask, with Spring Retainer	P8026	O Clamp, S/S, for 1000ml Flask, with Spring Retainer
P8007	T Clamp, Spring S/S , for 2000ml Flask, with Spring Retainer	P8027	O Clamp, S/S, for 2000ml Flask, with Spring Retainer
P8008	T Clamp, Spring S/S, for 3000ml Flask, with Spring Retainer	P8028	O Clamp, Spring S/S, for 3000ml Flask, with Spring Retainer
P8009	T Clamp, Spring S/S, for 5000ml Flask, with Spring Retainer	P8029	O Clamp, Spring S/S, for 5000ml Flask, with Spring Retainer
P8013	T Clamp, S/S, for 150ml Flask, with Spring Retainer	S/S: Stainless Steel	
P8014	T Clamp, S/S, for 300ml Flask, with Spring Retainer		

Tube Racks & 96 Well Plate Clamp

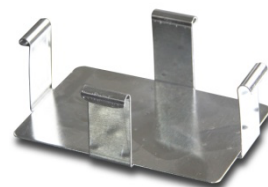
- Tube racks are available in stainless steel and ABS plastic.
- P8010 stainless steel tube rack set contains one clamp holder and one stainless steel rack. With two adjusting knobs, the rack itself can be randomly fixed at 0-90 degree angles. It is available with different sizes of holes for various sizes of test tubes. While every tube rack has the same overall dimension, as **30x11x11cm**. For example,
 - P8010-10: Tube Rack S/S, $\Phi 10.5 \times 60$; For 1.5/2ml Eppendorf Tubes
 - P8010-18: Tube Rack S/S, $\Phi 18.5 \times 52$; For 15ml Falcon Tubes
 - P8010-30: Tube Rack S/S, $\Phi 30 \times 20$; For 50ml Falcon Tubes
- P8011 ABS plastic tube rack set include a stainless steel clamp and an ABS plastic tube rack.



P8010-18



P8011



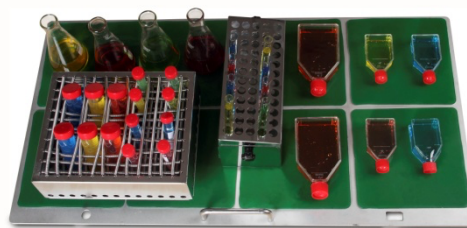
P8012

Part NO.	Description	Part NO.	Description
P8010-10	Tube Rack S/S, $\Phi 10.5 \times 60$	P8010-22	Tube Rack S/S, $\Phi 22.5 \times 36$
P8010-14	Tube Rack S/S, $\Phi 14.5 \times 60$	P8010-25	Tube Rack S/S, $\Phi 25 \times 24$
P8010-15	Tube Rack S/S, $\Phi 15 \times 60$	P8010-30	Tube Rack S/S, $\Phi 30 \times 20$
P8010-16	Tube Rack S/S, $\Phi 16 \times 60$	P8010-32	Tube Rack S/S, $\Phi 32 \times 17$
P8010-17	Tube Rack S/S, $\Phi 17.5 \times 55$	P8010-35	Tube Rack S/S, $\Phi 35 \times 15$
P8010-18	Tube Rack S/S, $\Phi 18.5 \times 52$	P8011	Tube Rack ABS Plastic
P8010-20	Tube Rack S/S, $\Phi 20 \times 36$	P8012	T Clamp for 96 Well Plate, S/S
P8010-21	Tube Rack S/S, $\Phi 21 \times 36$	P8032	O Clamp for 96 Well Plate, S/S

Sticky Mat

The Labwit Sticky Mat is designed for attaching culture vessels, such as flasks, bottles, dishes etc onto the shaking platforms for all shaking equipments, for example, shakers, rockers as well as shaking incubators. It can be used to cover the shaking platforms replacing the traditional flask clamps. The Sticky Mat can be easily removed and repositioned by simply peeling off the shaking tray surface. With proper care, the Sticky Mat can be durable and last for several years.

- **Universal Choice for Vessels and Shaking Trays**
The Sticky Mat is suitable for use on any shaking trays/platforms, including those with predrilled or threaded holes, to fix various types of vessels onto the shaking trays.
- **High Shaking Speed**
With strong stickiness, the Sticky Mat can be used for fastening the vessels with shaking speed up to 300rpm. (See specification table for more details)
- **Handy to Install and Clean**
Simply apply the Sticky Mat firmly without air bubble while it's wet. Rinse the mat under running water, or use mild soapy water if necessary
- **Wide Temperature Range**
The mat is proven to be safe to use over a wide range of temperature from 15-60°C.
- **Handy Shape and Size**
The size of 20 x 20cm in square shape makes it easy to place small vessels, and handy to be removed.
- **Easy to Remove the Vessels**
Gently pull the vessel and hold for a while, the vessel will be removed effortlessly



Specifications:

Part NO.	Description	
P8017	Sticky Mat, 20 x 20cm	
Only apply to flasks with filling volume 20%. Both flasks and Sticky Mat must be completely intact, clean, dry and free of grease. All information supplied without liability. Only valid for standard glass Erlenmeyer Flasks. For vessels made of other materials, the maximum speed varies upon the shape and size of the vessel's bottoms		
Flask Size	Max Speed @ Shaking Diameter 25-50mm	Max Speed @ Shaking Diameter <25mm
50-750ml	250rpm Max	250rpm Max
1000ml	250rpm Max	300rpm Max
2000ml	250rpm Max	300rpm Max
3000ml	300rpm Max	300rpm Max
5000ml	250rpm Max	300rpm Max

Grid Plates

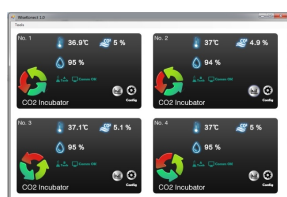
(For Incubators & Drying Ovens)

- Anti-tilt design with high quality stainless steel

Part NO.	Description	Part NO.	Description
P9001	Grid Plate for ZXDP-B2050, S/S	P9017	Grid Plate for ZXRD-B5030, S/S
P9002	Grid Plate for ZXDP-B2080, S/S	P9018	Grid Plate for ZXRD-B5055, S/S
P9003	Grid Plate for ZXDP-B2120, S/S	P9019	Grid Plate for ZXRD-B5110, S/S
P9004	Grid Plate for ZXDP-B2160, S/S	P9020	Grid Plate for ZXRD-B5210, S/S
P9005	Grid Plate for ZXDP-B2270, S/S	P9021	Grid Plate for ZXRD-7080, S/S
P9006	Grid Plate for ZXGP-B2050, S/S	P9022	Grid Plate for ZXRD-7140, S/S
P9007	Grid Plate for ZXGP-B2080, S/S	P9023	Grid Plate for ZXRD-7230, S/S
P9008	Grid Plate for ZXGP-B2160, S/S	P9024	Grid Plate for ZXFD-B5040, S/S
P9009	Grid Plate for ZXGP-B2270, S/S	P9025	Grid Plate for ZXFD-B5090, S/S
P9010	Grid Plate for ZXSD-B1090, ZXSD-R1090, S/S	P9026	Grid Plate for ZXFD-B5140, S/S
P9011	Grid Plate for ZXSD-B1160, ZXSD-R1160, S/S	P9027	Grid Plate for ZXFD-B5250, S/S
P9012	Grid Plate for ZXSD-B1270, ZXSD-R1270, S/S	P9028	Grid Plate for ZXFD-B5430, S/S
P9013	Grid Plate for ZXSD-B1430, ZXSD-R1430, S/S	P9029	Grid Plate for ZXFD-B5600, S/S
P9014	Grid Plate for ZXMP-A1150, S/S	P9030	Grid Plate for ZXSP-R0160, S/S
P9015	Grid Plate for ZXMP-A1230, S/S	P9031	Grid Plate for ZXSP-R0270, S/S
P9016	Grid Plate for ZXMP-A1430, S/S	P9032	Grid Plate for ZXSP-R0430, S/S
S/S: Stainless Steel		P9033	Perforated Shelf Plate for ZOCC-1150B

Shaking Frames & Others

Part NO.	Description	Part NO.	Description
P4001	WiseKonect Data Connection Kit	P5001	Single Layer Shaking Frame for ZWY-1102C/2102C, ZWYR-2102C, Stl S/C
P4002	Right Hinged Door, ZOCC-1150B	P5002	Single Layer Shaking Frame for ZWY-1102/2102, ZWYR-2102C, Stl S/C
P4003	Built-in Printer	P5003	Single Layer Shaking Frame for ZWY-1112B/2112B, ZWYR-2112B, Stl S/C
P4004	Gas Tank Autoswitching Kit	P5006	Single Layer Shaking Frame for ZWY-322B/3222B, Stl S/C
P4011	Gable lid for ZSBB-712, S/S	P5008	Single Layer Shaking Frame for ZWY-322C/ B3222, Stl S/C
P4012	Gable lid for ZSBB-724, S/S	P5010	Base Stand for ZWYR-D2401, 1300*800*500mm
P4013	Gable lid for ZSBB-726, S/S	P5011	LED Lighting Panel and Control Kit, For ZWYR-D2401/D2402/D2403, ZWYC-290A
P4014	Gable lid for ZSBB-728, S/S	P5012	Base Stand for ZWYC-290A, 1080x720x500mm
S/S: Stainless Steel		P5013	Direct Steam Humidification Kit for ZWYC-290A
		P5014	IR CO2 Kit for ZWYC-290A
		P5015	WiseKonect Plus™ Data Connection Kit



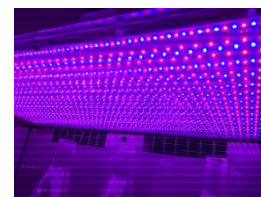
P4001



P4003



ZWYR-D2401 & P5010



P5011

Labwit quality assurance program demands the continuous assessment and improvement of all Labwit products. Information in this leaflet could thus change without notification and does not constitute a product specification. Please contact Labwit or their representatives if you require more details

LABWIT Scientific Pty Ltd T: +61 403 838 963 W: www.labwit.com.au E: info@labwit.com.au ABN: 99 155 819 980 All Rights Reserved.