

Benchtop Shakers



ZWY-304



ZWF-334



ZWQ-344

Overview:

Shakers and rockers are ideal for almost any vessels from tubes through petri dishes and microtitre plates to conical flasks. Shakers are available with either an orbital action where the platform moves in a circular orbit or a reciprocal linear movement where the platform moves back and forth horizontally. An orbital action provides a swirling action on the sample, ideal for aeration. A linear shaker is more aggressive making it ideal for applications such as extractions. A see saw rocking action provides a wave motion in the sample, ideal for washing.

Benchtop Orbital Shaker

The ZWY-304 provides a smooth uniform circular motion with an orbit of 30mm. The shaker can be used in incubators and warm room if the temperature is not higher than 50°C.

The standard cradle platform can turn ZWY-304 unit into a very effective mini platform shaker, which allows for different combinations of vessels offering maximum versatility. Alternatively, the tray is interchangeable with flask clamp tray (ZWF-334) or non-slip mat tray (ZWQ-344).

Speed is variable from 30 to 300rpm, with shaking times can be set to run from 0-500hours, or set for continuous operation. The non-volatile memory restores all settings after power failure.

Benchtop Reciprocal Shaker

The ZWF-334 lab scale platform shaker has a powerful yet quiet shaking mechanism that has been designed for problem free continuous use. This unit provides a versatile linear shaking action with unique 4 level stroke adjustment from 20, 24, 30 to 40mm, ideal for most extracting applications.

Speed is fully variable from 30-300rpm, and is set digitally for consistency. The speed is microprocessor controlled and accurately maintained even over long runs. The built-in timer can be set from 0-500hours. After the timer has counted down, the shaker stops and sounds an alert. The flask clamp tray is fitted as standard, while can be interchanged with non-slip mat tray or cradle platform.

Benchtop See Saw Rocker

ZWQ-344 has a see-saw rocking action that creates a wave motion within vessels such as culture flask, petri dishes etc. one unique feature of this unit is ZWQ-344 provides 4 level of tilt angles from 5°, 8°, 10° and 12°, ideal for washing.

The speed is microprocessor controlled, variable from 20-80rpm. The model is supplied with a non-slip mat. The large LCD screen with user-friendly digital keypad ensures clear readout and easy operation. Like all other benchtop shakers, all settings of speed and time are encrypted to prevent unauthorized changes.

Specifications:

Model	ZWY-304	ZWF- 334	ZWQ- 344
Action Mode	Orbital	Reciprocal	Rocker
Speed Range (/min)	30-300 rounds	30-300 strokes	20-80 tilts
Speed Variation (/min)	±1 round	±1 stroke	±1 tilt
Stroke	Ø30 mm	20, 24, 30, 40 mm	5°, 8°, 10°, 12°
Tray Dimensions (mm)	330x350	330x350	330x350
Accessory Included	Rubber Bar Tray OR Clamp Tray		Tray with non-slip mat
Timer	1 minute to 500 hours	1 minute to 500 hours	1 minute to 500 hours
Maximum Load (kg)	7.5	7.5	4
Overall Dimensions (mm) (WxDxH)	400x350x235	400x350x160	400x360x185
Packing Dimensions (mm) (WxDxH)	490x490x420	490x490x400	490x490x365
Net / Gross Weight (kg)	25/37	14/26	10/20
Safety Features	Non-volatile Memory, Power-off Recovery, Timer,		
Power (W)	50		
Electricity	220-240V 50/60 Hz		
Approval	CE, ISO		

Clamp Tray	50ml	100ml	250ml	500ml	750ml	1000ml	2000ml	3000ml	5000ml	P8010	P8012
P6016	25	16	12	9	7	5	4	1	1	10	28

Ordering Information:

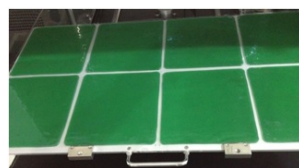
Part NO.	Description	Part NO.	Description
ZWY-304	ZWY-304 Orbital Benchtop Shaker, 30-300rpm	P8014	T Clamp, S/S, for 300ml Flask, with Spring Retainer
ZWF-334	ZWF-334 Reciprocal Benchtop Shaker, 30-300rpm	P8004	T Clamp, S/S, for 500ml Flask, with Spring Retainer
ZWQ-344	ZWQ-344 Rocking Benchtop Shaker, 20-80 tpm	P8005	T Clamp, S/S, for 750ml Flask, with Spring Retainer
P6016*	Tray for ZWY-304/ZWF-334, S/S✳️ Clamp Tray	P8006	T Clamp, S/S, for 1000ml Flask, with Spring Retainer
P6017	Tray for ZWY-304/ZWF-334, S/S Bar Trayx1, Rubber Barx4, Knobx8	P8007	T Clamp, Spring S/S, for 2000ml Flask, with Spring Retainer
P6018	Tray for ZWQ-344, Stl S/C# Trayx1, Springx4, Rubber Matx1	P8008	T Clamp, Spring S/S, for 3000ml Flask, with Spring Retainer
P7017	Universal Spring Tray for ZWY-304/ZWF-334	P8009	T Clamp, Spring S/S, for 5000ml Flask, with Spring Retainer
P8001	T Clamp, S/S, for 50ml Flask, with Spring Retainer	P8010	Tube Rack S/S
P8002	T Clamp, S/S, for 100ml Flask, with Spring Retainer	P8011	Tube Rack ABS Plastic
P8013	T Clamp, S/S, for 150ml Flask, with Spring Retainer	P8012	Clamp for 96 Well Plate, S/S
P8003	T Clamp, S/S, for 250ml Flask, with Spring Retainer	P8017	Sticky Mat, 20 x 20cm



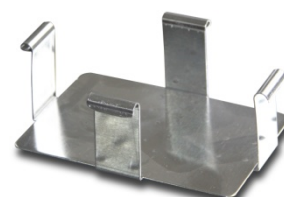
P7017



P8010



P8017



P8012

Labwit quality assurance program demands the continuous assessment and improvement of all Labwit products. Information in this leaflet could thus change without notification and does not constitute a product specification. Please contact Labwit or their representatives if you require more details